



SADB



SAPN | KANGAROO ISLAND 33kV POWERFEED

CAPABILITY STATEMENT

*To be the leader in innovative, cost effective civil construction,
trenching and horizontal directional drilling.*

ABOUT US

Established in 1995, SADB is a civil construction company that specialises in Civil Works, HDD (Horizontal Directional Drilling), Project Management, Civil and Pipeline Design & Construction and NDE (Non Destructive Excavation). SADB provides Civil construction and HDD for both public and private sectors.

OUR HISTORY

Originally founded in 1964, evolving to SADB in 1995 and today still remaining a local South Australian family owned and operated business. SADB were one of the initial pioneers of HDD in Australia and are now considered a market leader in both civil utility construction and HDD.



1964

Formation of family business specialising in waste removal and landscaping.



1995

Industry opportunity brought on major diversification into directional drilling.



2007

SADB were now pioneering directional drilling for the emerging recycled water industry.



2019

Working with major clients on various civil construction, pipeline construction and drilling projects.



OUR VISION

To be the leader in innovative, cost effective civil construction and underground services installation.

OUR MISSION

Our focus is on safety and security; we strive to deliver enduring value for our internal and external stakeholders through relationships, customer and industry focused solutions.

This is achieved by:

Safety and Security

Provide a safe & compliant work place environment for all staff, customers and the public.

Deliver an ongoing sustainable business that provides security to all key stakeholders (staff, owners & customers).

People

Attract, develop and retain the best people for the task

Customer

Strive to exceed our customer's expectations every time

OUR VALUES

Customer Focus



Continual Improvement & Innovation



Safety & Security



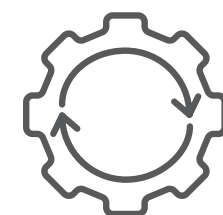
Problem Solving



Collaboration & Team Work



Sustainability



DID YOU KNOW?

✓ **South Australian Proud**

Industry Participation Policy compliant, SA based FTE, self performing, SA subcontractors and suppliers

✓ **Training Excellence**

Planned training days, proactive skills assessment, in-house training program for young workers

✓ **Workforce Diversity**

✓ **Building Code 2016 Compliant**

✓ **Strong supplier and subcontractor relationships**

✓ **Quality, Safety and Environment Management System with Certification**

CORE COMPETENCIES

At SADB we believe a successful business must focus on several core competencies. We proactively review and develop our business around these.

Our Integrated Management System is an integral component of SADB's daily operations. This includes our external third party accreditation in Quality, Safety and Environmental management, which we have retained for over 15 years.



Our staff have extensive experience in project management, civil construction and HDD. They are supported by a team of dedicated project administration staff.

Our field staff are accredited with Certificate III in Civil Construction. Following on from this, we have a strong induction program and provide extensive ongoing training for skill development, accreditation and license acquisition.

PLANT & EQUIPMENT

SADB own and maintain an extensive fleet of relevant, up to date plant and equipment including:

- ✓ Directional Drill Rigs
- ✓ Excavators
- ✓ Tippers
- ✓ Hydro Excavation Units
- ✓ Compaction Equipment

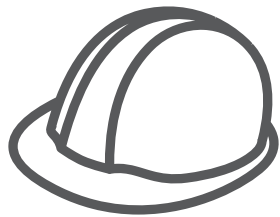
OUR CAPABILITIES

SADB offers full construction and development solutions, including:

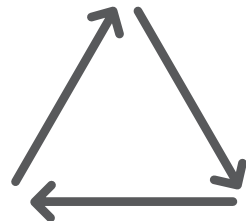
- ✓ Civil Construction Works/ Projects
- ✓ Project Management and Engineering Services
- ✓ Trenching
- ✓ Horizontal Directional Drilling
- ✓ Service Locations
- ✓ Non-Destructive Excavation (NDE)
- ✓ Pipeline Design

OUR SERVICES

Civil Construction



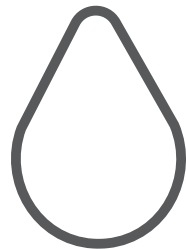
Grey & Purple Water



Electrical

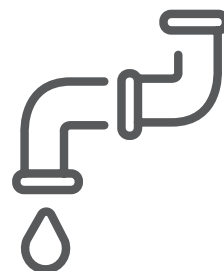


Potable Water

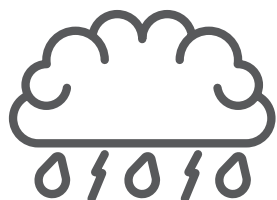


Pipeline
Construction
Networks We
Specialise In

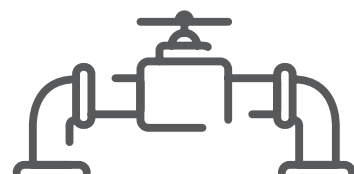
Sewer



Stormwater



Gas Mains



Communications



OUR PROJECTS

KANGAROO ISLAND 33kV POWERFEED

SA Power Networks



- ✓ Bore profile, trench alignment & methodology for installation of conduit for 33KV cable
- ✓ Construction of an access track with a gradient of 52 degrees in an environmental sanctuary
- ✓ Construction of a creek access bridge
- ✓ Drill and installation of conduits and cable
- ✓ Construction of 4 x HV poles, large concrete clamping pit and manhole
- ✓ Construction of substation: earth grid and stakes, concrete clamping access and penetrations



2018-2019



Head Contractor



Electrical

FLINDERS ST MANHOLES

SA Power Networks



- ✓ Upgrade of existing SAPN network for power supply to new high rise apartments development.
- ✓ Construction of 6m x 4m x 3m precast concrete manhole
- ✓ Installation of feeder conduits and transformers for 2 CBD sites



2018



Head Contractor



Electrical

CALVARY HOSPITAL MANHOLES

SA Power Networks

- ✓ Principle contractor providing installation of 3 pre-cast concrete manholes, each 5m x 5m x 3m
- ✓ Live service support and associate conduit installation
- ✓ Inner city location providing power to the Calvary Hospital



2017



Head Contractor



Electrical

OLD RAH MANHOLES

SA Power Networks



- ✓ Supply and installation of two new precast manholes (4.3 x 3.6 x 2.3 and 5.4 x 3.4 x 2.9) including the demolition/removal of the existing masonry manhole on North Tce
- ✓ Supply and installation of 1 precast pulling bay on North Tce and 1 jointing bay on Frome Rd
- ✓ Supply and installation of the feeder conduits
- ✓ 450m of 12 way to 16 way conduits from Frome Road through to North Terrace
- ✓ Tie in to Lot 14 off Frome Road and Lot 14 off North Terrace (old RAH compound)



2019



Head Contractor



Electrical

LIGHTSVIEW FEEDER

SA Power Networks



- ✓ Installation of new electrical feeder. Conduit installation and civil works
- ✓ Civil construction via mechanical excavation, non-destructive excavation and horizontal directional drilling of electrical conduits, poles, pits and transformer vaults
- ✓ 380m of 6 x 125mm & 1 x 110mm conduits installed via directional drilling and 60m via Trenching under DPTI Road
- ✓ 20 x pole footings and 1 x vault installed



2019



Head Contractor



Electricity

HAMPSTEAD RD PLEC

SA Power Networks

- ✓ Extensive directional drilling, trenching activities and footing construction
- ✓ Directional drilling of 1,295 lineal metres, 445m of trenching, 6 stobie pole footings and 30 light pole footings
- ✓ Due to the location of the works and the volume of traffic, SADB had to also plan carefully and precisely to ensure to not impact the flow of commuters to and from work



2018 - 2019



Head Contractor



Electricity

MAGILL PLEC

SA Power Networks



- ✓ Construction of the stobie pole footings and the civil works for transformer and switching cubicles
- ✓ Conduit route approx 2.6 km – 16,000 Linear metres of conduit installed – via HDD and trenching
- ✓ Conduit, pit and pillar installation and reinstatement works including all paving, concrete reinstatement and roadway reinstatement
- ✓ Construction of all lighting column footings, new pole footings, traffic signal footings and installation of switching cubicles



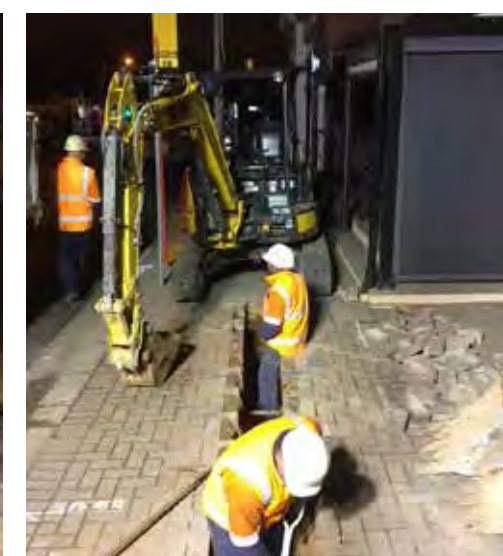
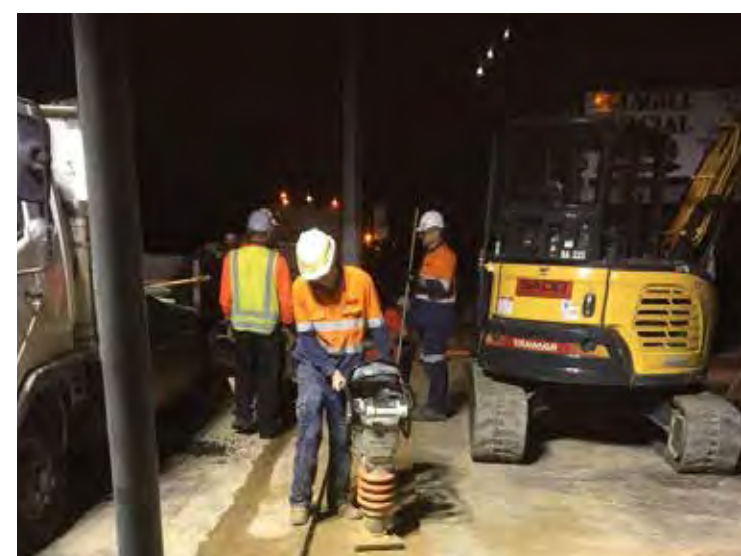
2019



Head Contractor



Electrical



PARKSIDE

City of Unley



- ✓ Installation of 550m of 900mm box culverts
- ✓ Reinforced concrete pipe (375mm to 1050mm in diameter)
- ✓ Junction boxes
- ✓ Connection to existing drainage system



2018



Head Contractor



Stormwater

CHURCHILL RD

City of Prospect



- ✓ Construction of 1500mm x 750mm Stormwater Culvert
- ✓ Total of 260m with Junction Pits and Side Entry Pits
- ✓ Management and containment of high level contaminated soil



2016



Head Contractor



Stormwater

HERON WAY

City of Marion



- ✓ Upgrade the existing stormwater system's capacity, by replacing the trunk drain between the Heron Way Reserve Outfall and Heron Way with larger diameter pipe
- ✓ Supply and install Stormwater infrastructure ranging from 1650 to 1050 RCP.
- ✓ Demolish and remove existing infrastructure and pour in-situ new junction boxes x 6 as well as a 1650 headwall on the foreshore
- ✓ Division of outflow stormwater during construction



2019



Head Contractor



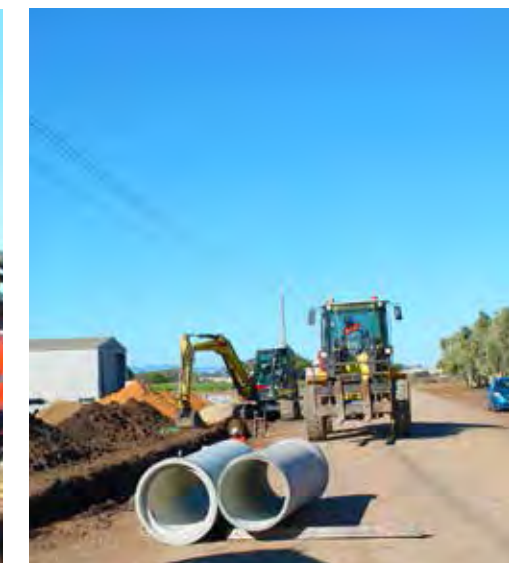
Stormwater

CARCLEW AND HAYMAN RD

City of Playford



- ✓ Trench and lay 500m of 600mm stormwater pipe at a 0.2% grade
- ✓ Install 6 junction boxes and a headwall to connect to an existing swale
- ✓ Re-design a section to allow for private water main that runs through stormwater alignment
- ✓ Pitch rocks in Gawler River at stormwater outlet to mitigate any potential erosion caused by stormwater flow
- ✓ HDD 2 x 150m of 450mm Stormwater pipe at 2% grade




2019


Head Contractor


Stormwater

**WE OFFER EARLY
CONTRACTOR
INVOLVEMENT, DESIGN &
CONSTRUCT SERVICES**

BIRDWOOD CWMS PUMP STATION

Adelaide Hills Council



- ✓ Supply and installation of 1900 metres of new construction 110mm and 180mm pressure main
- ✓ Connection of the new pressure main to the existing pump station discharge, valves and head works
- ✓ Connection to the existing balance tank at the Birdwood WWTP



2019



Head Contractor



Sewer

CWMS TRUNK MAIN UPGRADE

City of Tea Tree Gully

- ✓ Installation of 450mm HDPE pipe and 630 metres of HDD and trenching
- ✓ Installation of 6 manholes, 2 maintenance shafts and 14 property connections
- ✓ Social benefits to the project via drilling included reduced disruption to the direct residents and the local neighbourhood



2018



Head Contractor



Sewer

MOUNT BARKER CWMS / LITTLEHAMPTON

District Council of Mount Barker



- ✓ SADB were engaged in the design and construction of the upgrade of the council sewer system.
- ✓ 15km of CWMS/ Sewer via HDD to grade
- ✓ Pipe sizes ranging from 180mm to 710mm HDPE
- ✓ Construction of manholes, maintenance shafts and associated civil works



2017 - 2019



Head Contractor



Sewer

SA WATER NAIS PROJECT

LEED / VERZOLA



- ✓ Directional Drill and install 1 x 710mm PN 20 PE pipe, under Gawler River and through Aboriginal sensitive area
- ✓ Total drill length 440 metres. Completed via a 100,000 Pound Drill Rig.
- ✓ The drill was completed with 5 passes, pilot, 450mm, 600mm, 750mm and 900mm cuts
- ✓ Pipe installation took 8 hours to complete



2019



Subcontractor



Water

GORGE RD

SA Water



- ✓ Upgrade SA Water main via slip lining of the existing MSCL DN525 trunk main with DN450 HDPE x 1.2km
- ✓ 1,200 metres of pipe installed in 3 drill shots of 350m, 400m and 450m.



2018



Subcontractor



Water

ADELAIDE OVAL PROTECTIVE BOLLARDS

DPTI



- ✓ Design and construct security protective bollards in the Adelaide Oval precinct. Including multiple terrace concrete walling and planter boxes.
- ✓ Mechanically (automatic) retractable bollards rated to the designated impact loading
- ✓ Mechanically (manual) retractable bollards rated to the designated impact loading
- ✓ Fixed bollards rated to the designated impact loading



2017-2018



Head Contractor



Civil Construction

ADELAIDE AIRPORT PROTECTIVE BOLLARDS

Adelaide Airport Authority



- ✓ Removal of existing concrete/ paving
- ✓ Excavation to footing – hydro vac
- ✓ Installation of footings, reo bar and concrete pour
- ✓ Bollard drainage installed
- ✓ Set bollards and installation
- ✓ All paving to be reinstated to suit newly installed bollards.



2019



Head Contractor



Civil Construction

CIVIC PARK CREEK UPGRADE

CITY OF TEA TREE GULLY



- ✓ Reconfigure the existing stormwater and creek infrastructure
- ✓ Other works included backfill of existing ponds, installation of new stormwater system, catchment pits, head walls and bio-filtration pits
- ✓ Irrigation, landscaping and revegetation works were also completed



2015



Head contractor



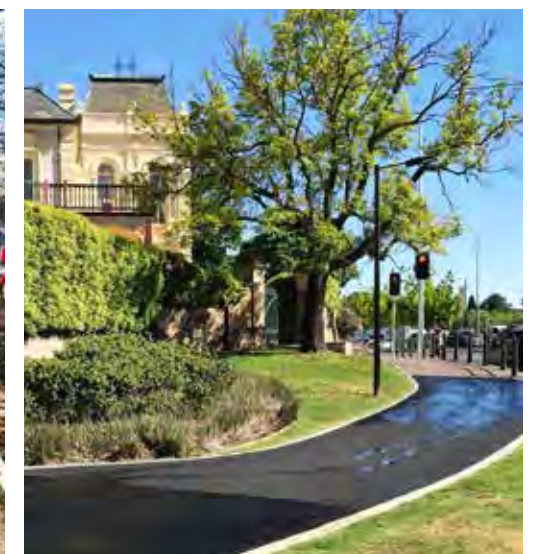
Civil Construction

MOUNT BARKER INTERSECTION

District Council of Mount Barker



- ✓ Upgrade the intersection of Adelaide Road and Gawler Street
- ✓ Demolition of the intersection and relocation of services through the area
- ✓ Construction of roadway and pedestrian crossing
- ✓ Construction and further extension of a shared path linear trail
- ✓ Installation of traffic crossing signals and lighting through the main intersection



2017-2018



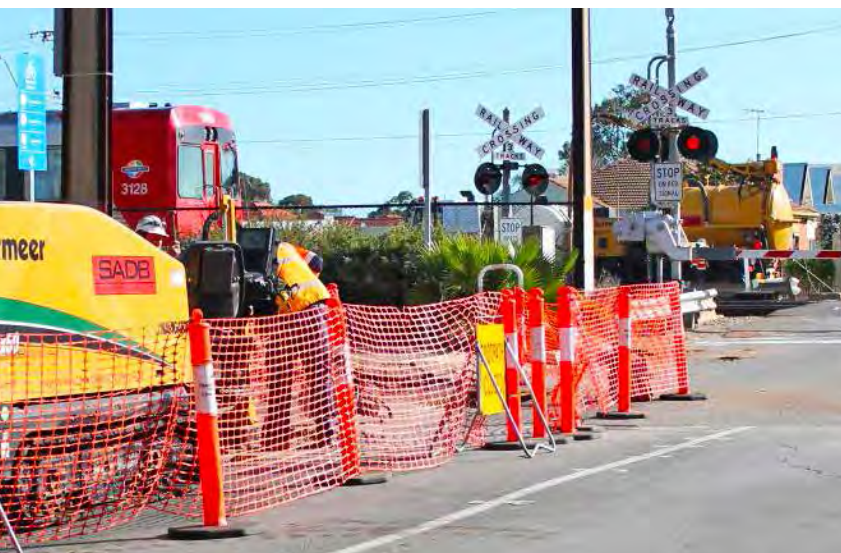
Head Contractor



Civil Construction

GAWLER RAIL ELECTRIFICATION

DPTI / SAPN



- ✓ SADB undertook the aerial service relocations at 14 sites, 9 of the sites required directional drilling under PTS and ARTC rail lines
- ✓ Other works completed were full service locations, engineered design for the 70% design approval to then 100% design IFC.



2018 - 2019



Subcontractor



Common Services Trench/ Rail

T2T
DPTI

- ✓ Multiple works packages for CST and electrical upgrade works
- ✓ HDD installation of multiple conduits under rail and roadway
- ✓ 20km of CST pit and pipe installation including traffic signal works
- ✓ Concrete manhole and joining pit installation



2016-2018



Subcontractor



Common Services Trench/ Rail

RECYCLED WATER INSTALLATION

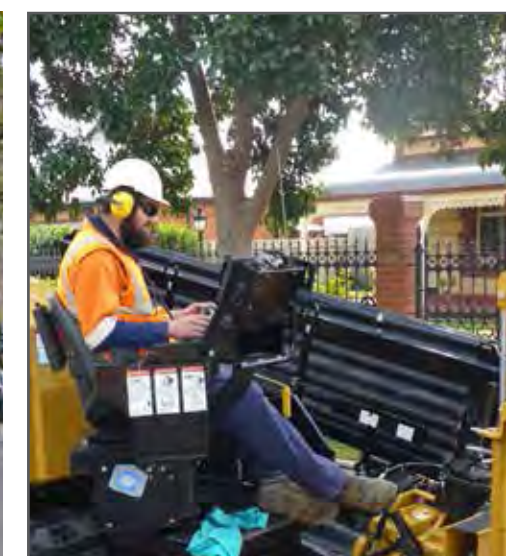
VARIOUS COUNCILS



- ✓ Design and construct of recycled water pipeline network throughout metro Adelaide
- ✓ Installation of pipeline ranging from 63mm to 710mm HDPE
- ✓ Construction of pump stations, wet lands, bio-filters and associated civil works

Councils involved included:

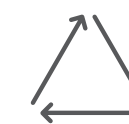
- ✓ Salisbury
- ✓ Burnside
- ✓ Walkerville
- ✓ Marion
- ✓ Norwood, Payneham & St Peters
- ✓ Charles Sturt
- ✓ Playford
- ✓ Tea Tree Gully
- ✓ Unley



2007-2019



Head Contractor



Recycled Water

